

Slim, Twin Twist, Floor Model Soft Serve/Yogurt Pressurized Freezer with Rear Opening Refrigerated Cab

0431RC

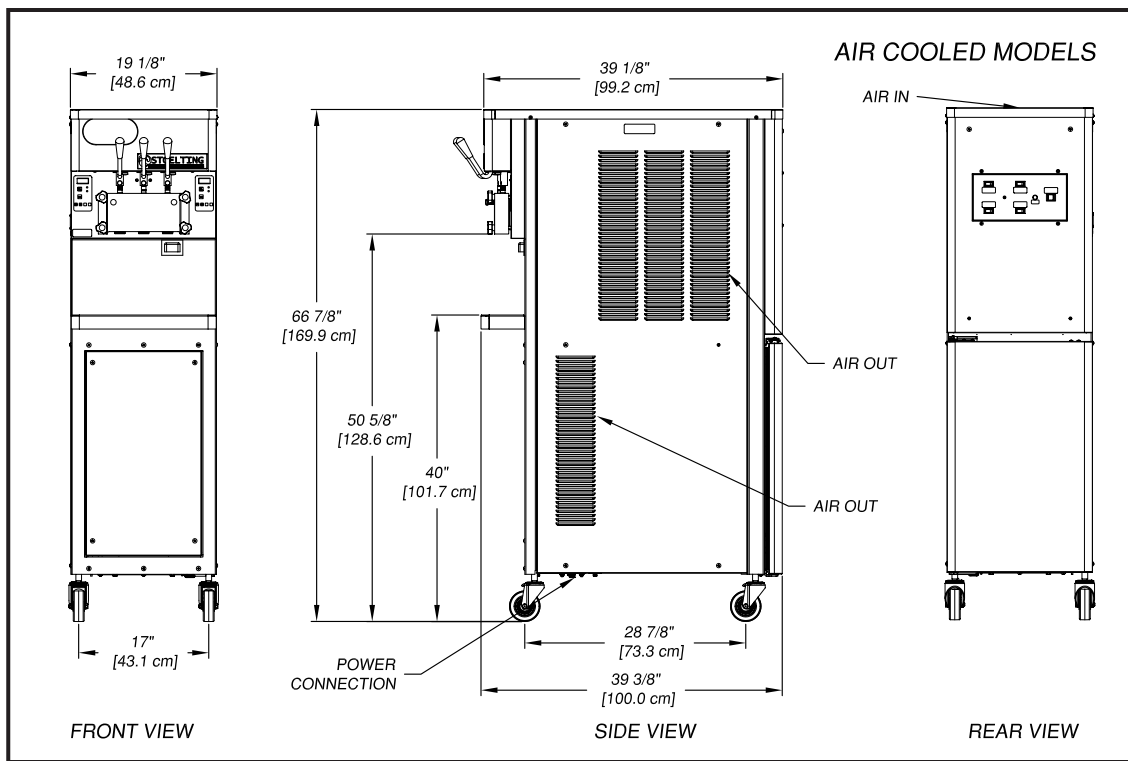


- Rear opening refrigerated cab, gives access to product from rear of machine without interrupting customer use.
- Maintains high production capacity in high temperature conditions. Provides greater reliability and quieter operation with the combination of Stoelting's high efficiency evaporator system and Scroll™ compressor.
- IntelliTec™ control with LCD display communicates with operator for worry-free operation (NAFEM Data Protocol capable).
- Mix pumps inject the exact amount of air into your mix, maintaining consistent overrun to assure maximum profitability with clean-in-place simplicity.
- Long-wearing parts offer low preventative maintenance costs.
- Energy Conservation Mode (ECM) protects product from overagitation during slow or non-draw periods.
- Proprietary auger design gently folds mix and prevents product breakdown, producing a smoother, creamier product.
- Clear door shows visible moving product for merchandising appeal.
- Self-closing spigot eliminates waste and ensures precise portion control.
- Adjustable dispense rate for optimal product output.
- Built for consistent control of all mixes, including low-fat, low-sugar mixes.
- Ideal choice for locations that offer self-serve or where space is an issue.
- Optional bag connection system eliminates potential contamination sources.

Above: Back view of 0431, showing rear access refrigerated cab and controls

Left: Refrigerated storage cabinet showing slide-out tray and bag connection system





Model O431 RC		
Dimensions	Machine	with crate
width	19-1/8" (48,6 cm)	27" (68,6 cm)
height	67-7/8" (172,4 cm)	78" (198,1 cm)
depth	37-3/4" (95,9 cm)	48" (121,9 cm)
Weight	500 lbs (226,7 kg)	650 lbs (294,8 kg)
* Electrical	1 Phase, 208-240 VAC, 60Hz	
running amps	Air Cooled 17A	Water Cooled 15A
connection type	NEMA L6-30P	NEMA L6-30P
International Option	1 Phase, 220-240 VAC, 50Hz or 3 Phase, 380-415 VAC, 50Hz	
Compressor	15,000 Btu/hr Scroll™ Compressor	
Drive Motor	Two - 3/4 hp	
Air Flow	Air cooled units require 3" (7,6 cm) air space on both sides.	
Plumbing Fittings	Water cooled units require 1/2" N.P.T. water and drain fittings.	
Hopper Volume	Two - 5.5 gallons (20,82 liters)	
Freezing Cylinder Volume	Two - 1 gallon (3,79 liters)	

Continuous research leads to ongoing product improvements; therefore, these specifications are subject to change without notice and should not be used as installation specifications.

* Machine requires a dedicated electrical circuit.

Distributed by:



FOODSERVICE EQUIPMENT

Representative in CIS Alfa Pack
Ukraine, Kiev, Obolonskaya naberezhnaya 7/3, office 1
tel.: +38(044) 587-56-17 (-18, -19)
http://www.alfapack.com.ua
e-mail: alfapack@alfapack.com.ua

ISO 9001:2008 Registered

Certified, Listed and/or Recognized by:



STMF-104C 04/12